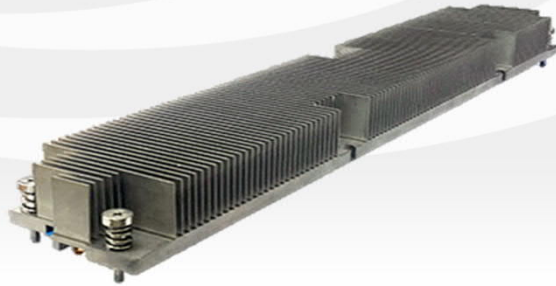




MODEL NAME

# TSANPZ92957-000



MOUNTING PITCH

OVER ALL DIMENSION

WEIGHT

N/A<sub>mm</sub>

352<sub>W</sub> \* 29<sub>H</sub> \* 57.3<sub>L</sub>mm

580<sub>G±5%</sub>

MATERIAL	AL SINK + HP
THERMAL INTERFACE MATERIAL	GR-Hm
THERMAL RESISTANCE	N/A
FAN DIMENSION	N/A
RATED SPEED	N/A
AIR FLOW	N/A
ACOUSTIC NOISE	N/A

## NOTE

-----  
-----



MODEL NAME

# TPANPC123A0-000



MOUNTING PITCH

OVER ALL DIMENSION

WEIGHT

72\*72<sub>mm</sub>

120.9<sub>w</sub>\*22.5<sub>H</sub>\*100<sub>mm</sub>

270<sub>G±5%</sub>

MATERIAL

AL BASE+ AL FIN+HP

THERMAL INTERFACE MATERIAL

T557

THERMAL RESISTANCE

-----

FAN DIMENSION

-----

RATED SPEED

-----

AIR FLOW

-----

ACOUSTIC NOISE

-----

## NOTE

-----  
-----

MODEL NAME

# TPANP7825B3-002



MOUNTING PITCH

97.5\*57.6mm

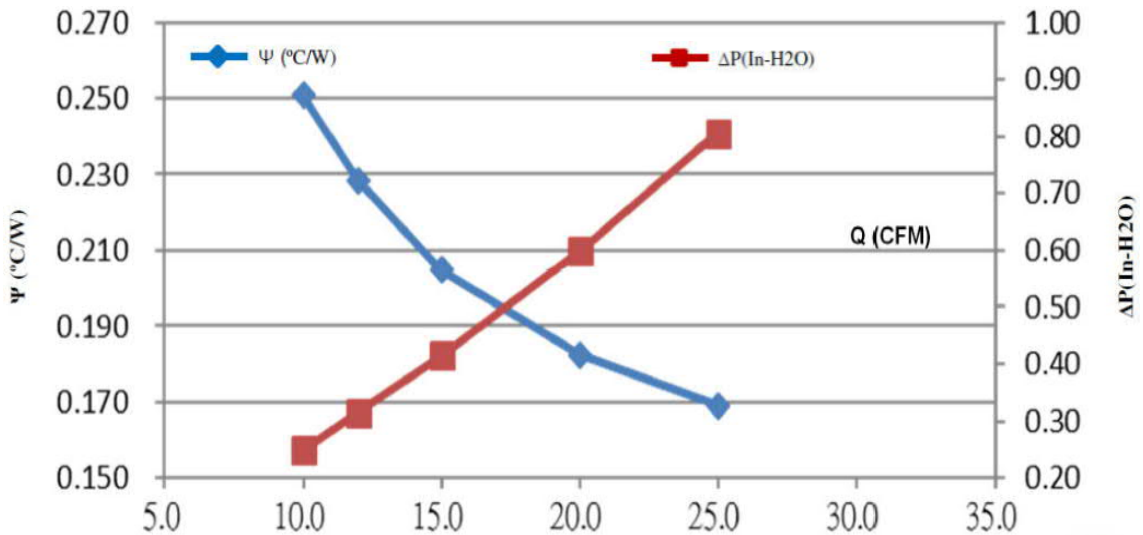
OVER ALL DIMENSION

78<sub>W</sub>\*113<sub>L</sub>\*24.7<sub>H</sub>mm

WEIGHT

250<sub>G±5%</sub>

MATERIAL	AL SINK + HEAT PIPE*3
THERMAL INTERFACE MATERIAL	Shin-Etsu X23-7921-5
THERMAL RESISTANCE	0.228 ( °C/W )@12CFM (165W)



NOTE

-----  
-----

MODEL NAME

# TPANP7864B3-003



MOUNTING PITCH

97.5\*57.6mm

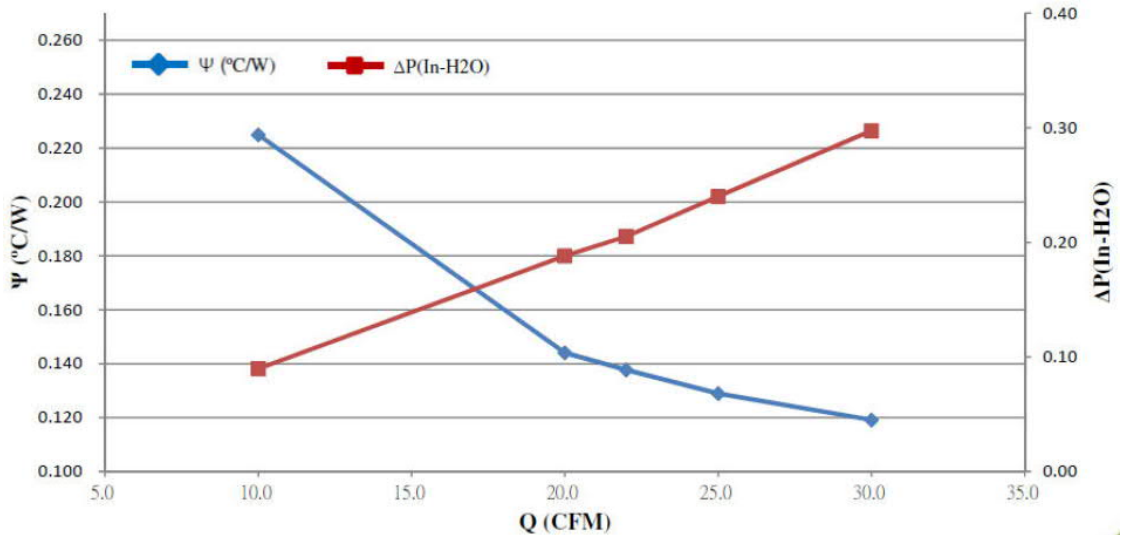
OVER ALL DIMENSION

78<sub>W</sub>\*113<sub>L</sub>\*64<sub>H</sub>mm

WEIGHT

435<sub>G±5%</sub>

MATERIAL	AL SINK + HEAT PIPE*4
THERMAL INTERFACE MATERIAL	Shin-Etsu X23-7921-5
THERMAL RESISTANCE	0.138 ( °C/W )@22CFM (205W)



NOTE

-----  
-----