


25x25x15 mm

1.3~3.1 CFM

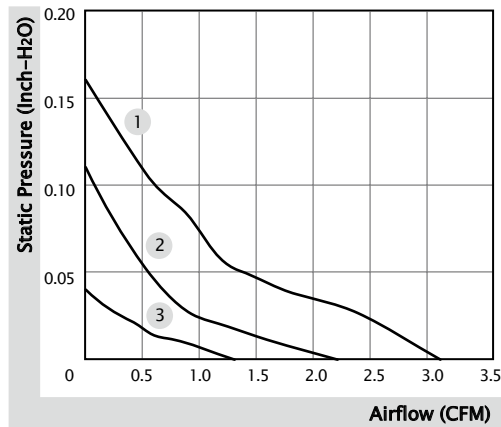


■ Specification

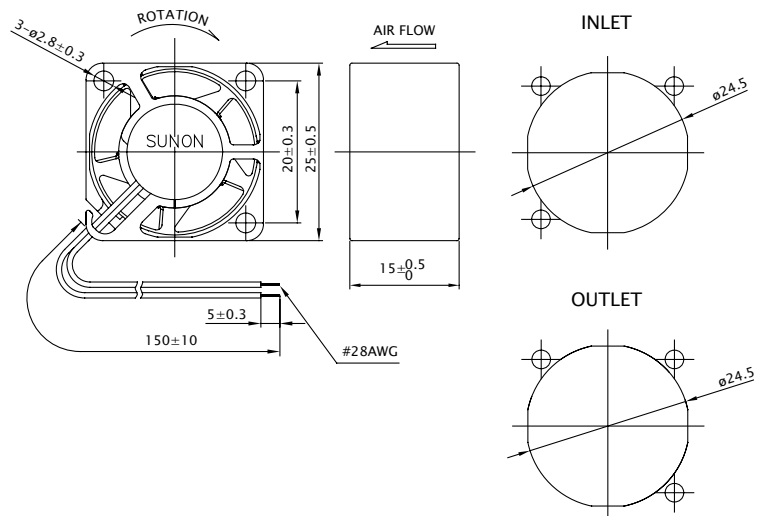
|  | Bearing | Rated Voltage | Power Current | Power Consumption | Speed | Airflow | Static Pressure | Noise | Weight | Curve |
|---|---------|---------------|---------------|-------------------|-------|---------|-------------------------|---------|--------|-------|
| | ● VAPO | (VDC) | (mA) | (WATTS) | (RPM) | (CFM) | (inch-H ₂ O) | (dB(A)) | (g) | |
| MF25150V1-10000-A99 | ● | 5 | 85 | 0.43 | 10000 | 3.1 | 0.16 | 20.0 | 9.4 | 1 |
| MF25150V2-10000-A99 | ● | 5 | 46 | 0.23 | 6800 | 2.2 | 0.11 | 11.3 | 9.4 | 2 |
| MF25150V3-10000-A99 | ● | 5 | 35 | 0.18 | 5300 | 1.3 | 0.04 | 4.5 | 9.4 | 3 |

■ Function R Type : F99 / F Type : G99 / PWM : H99, Q99, S99

■ Air Flow-Static Pressure Characteristics



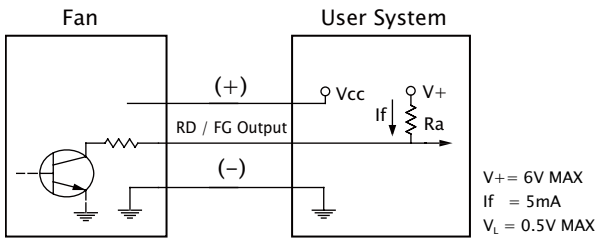
■ External dimensions(mm)



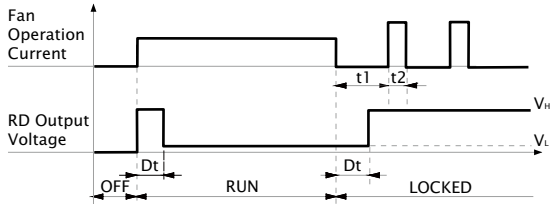
※ All model could be customized. Please contact with Sunon Sales.

※ Specifications are subject to change without notice. Please Visit SUNON website at www.sunon.com for update information.

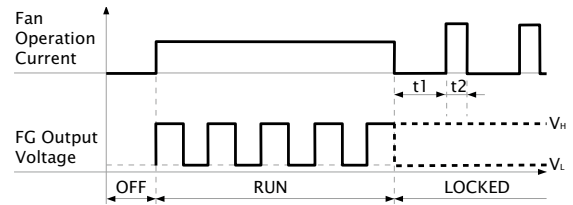
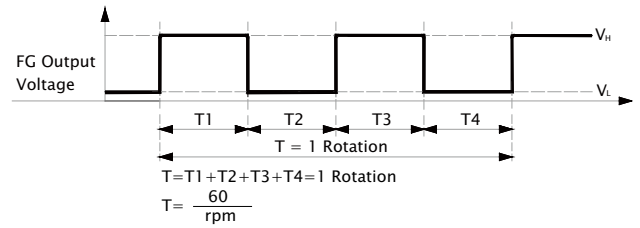
■ RD / FG Output Signal



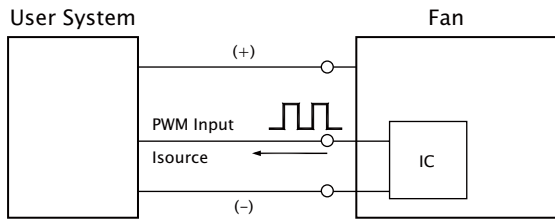
[RD Signal]



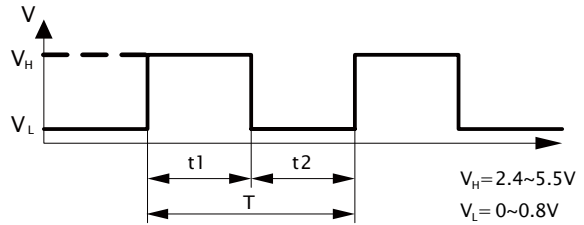
[FG Signal]



■ PWM Input Signal



PWM FREQUENCY: 25KHZ
 Isource=0.6mA at PWM Input Voltage 0V
 The speed is default to be maximum if PWM input pin is unconnected.
 V1, V2 Min. start up duty cycle is 20%.
 V3 Min. start up duty cycle is 30%.



1. Period : $T = \frac{1}{f_{PWM}} = T1 + T2(\text{sec})$

2. Duty Cycle (D.C.) : $\frac{t1}{t1+t2} \times 100 = \frac{t1}{T} \times 100(\%)$

■ PWM Curve

