

Cooling Fan & Blower for Refrigerator

*All products are RoHS compliant.



Waterproof & Dustproof : IP21 / IP 55
Operation temperature : -10°C ~ +70 °C
-20°C ~ +70 °C
-40°C ~ +50 °C

SUNON

Introduction

Established : 1980

Turnover : USD\$ 278 Million (2013)

World Wide Production Capability : 5 factories in Taiwan and China
Fans & Blowers—23M/Month
Thermal modules - 10M /Month

Major Products



Mighty Mini Fan & Blower



DC/AC Brushless Fan



DC/AC Brushless Blower



Fan Tray



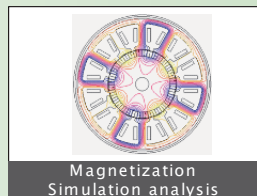
Customized Cooling Module



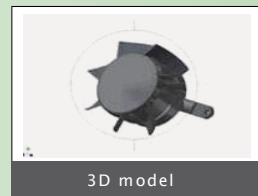
LED Thermal Solution

Global Service and Engineering Support

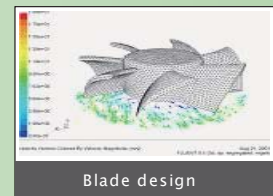
As a leader in the field of cooling solution technologies, Sunon's Research Center has accumulated 30 years of experience in product development. Backed by advanced simulation system and analysis engineering, Sunon offers its customers a wide variety of services for cooling solutions.



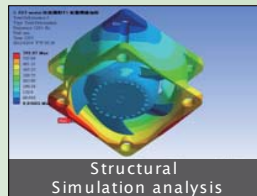
Magnetization Simulation analysis



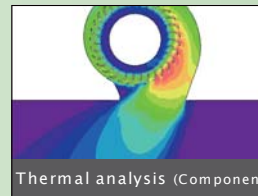
3D model



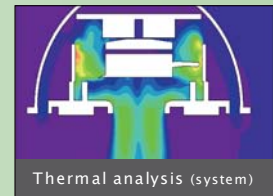
Blade design



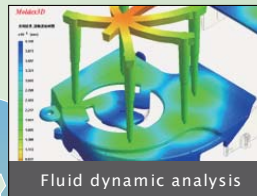
Structural Simulation analysis



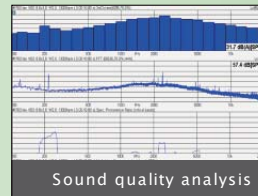
Thermal analysis (Component)



Thermal analysis (system)



Fluid dynamic analysis



Sound quality analysis



IR Thermograph



● Headquarters ● Subcompany ● Office ● Distributor / Rep.

- Over 1,000 sales representatives, 12 subsidiaries and offices, over 130 distributors around the world.
- 7 research centers which provide a worldwide technological service network for quick and efficient services.
- 5 reliability testing labs.

Cooling Fan for Refrigerator



Cooling Fan Specifications

size (mm)	Model	Bearing	Rated Voltage (V)	Speed (RPM)	Air Flow (CFM)	Static Pressure (In-H ₂ O)	Operation temperature			IP options IP21 IP55
							Standard	Customized option		
40x40x10	MB4010	Vapo	12	7000	8.0	0.19	-10°C~ +70 °C	N/A		IP21
	MB4010	Vapo	12	5800	7.0	0.11	-10°C~ +70 °C	N/A		IP21
	HA4010	Vapo	12	4500	5.3	0.06	-10°C~ +70 °C	N/A		IP21
40X40x20	MB4020	Vapo	12	8200	10.8	0.27	-10°C~ +70 °C	N/A		IP21
	MB4020	Vapo	12	7200	8.9	0.21	-10°C~ +70 °C	N/A		IP21
	MB4020	Vapo	12	6200	7.7	0.16	-10°C~ +70 °C	N/A		IP21
	MB4020	Vapo	12	5200	6.3	0.11	-10°C~ +70 °C	N/A		IP21
	HA4020	Vapo	12	4700	5.5	0.08	-10°C~ +70 °C	N/A		IP21
50x50x15	MB5015	Vapo	12	5800	17.0	0.23	-10°C~ +70 °C	N/A		IP21
	MB5015	Vapo	12	4700	13.0	0.17	-10°C~ +70 °C	N/A		IP21
	MB5015	Vapo	12	3700	10.2	0.12	-10°C~ +70 °C	N/A		IP21
	HA5015	Vapo	12	3200	7.7	0.06	-10°C~ +70 °C	N/A		IP21
60x60x10	MB6010	Vapo	12	4000	16.0	0.12	-10°C~ +70 °C	N/A		IP21
	MB6010	Vapo	12	3500	13.6	0.10	-10°C~ +70 °C	N/A		IP21
	MB6010	Vapo	12	3000	11.7	0.08	-10°C~ +70 °C	N/A		IP21
60X60x15	MB6015	Vapo	12	4300	21.0	0.18	-10°C~ +70 °C	N/A		IP21
	MB6015	Vapo	12	3800	18.0	0.14	-10°C~ +70 °C	N/A		IP21
	MB6015	Vapo	12	3000	15.0	0.12	-10°C~ +70 °C	N/A		IP21
	HA6015	Vapo	12	2500	10.8	0.04	-10°C~ +70 °C	N/A		IP21
60x60x20	PE6020	2B	12	5500	30.5	0.35	-10°C~ +70 °C	-20°C~ +70 °C	-40°C~ +50 °C	IP21 /IP55
	PE6020	2B	12	5000	27.5	0.28	-10°C~ +70 °C	-20°C~ +70 °C	-40°C~ +50 °C	IP21 /IP55
	PE6020	2B	12	4400	23.5	0.20	-10°C~ +70 °C	-20°C~ +70 °C	-40°C~ +50 °C	IP21 /IP55
	PE6020	2B	12	3600	19.5	0.15	-10°C~ +70 °C	-20°C~ +70 °C	-40°C~ +50 °C	IP21 /IP55
	PE6020	2B	12	3000	16.0	0.10	-10°C~ +70 °C	-20°C~ +70 °C	-40°C~ +50 °C	IP21 /IP55
	MB6020	Vapo	12	5100	25.5	0.24	-10°C~ +70 °C	N/A		IP21
	MB6020	Vapo	12	4500	23.0	0.18	-10°C~ +70 °C	N/A		IP21
	MB6020	Vapo	12	3700	19.0	0.14	-10°C~ +70 °C	N/A		IP21
	MB6020	Vapo	12	3000	16.5	0.10	-10°C~ +70 °C	N/A		IP21

* If you need special specification. Please contact Sunon sales.

* Specifications are subject to change without notice. Specifications in this catalog are for reference. More Sunon products information please visit SUNON website at www.sunon.com.

Cooling Fan for Refrigerator



Cooling Fan Specifications

size (mm)	Model	Bearing	Rated Voltage (V)	Speed (RPM)	Air Flow (CFM)	Static Pressure (In-H ₂ O)	Operation temperature			IP options IP21 IP55
							Standard	Customized option		
60x60x25	PE6025	2B	12	7600	40.0	0.64	-10°C~ +70 °C	-20°C~ +70 °C	-40°C~ +50 °C	IP21 /IP55
	PE6025	2B	12	6900	36.0	0.54	-10°C~ +70 °C	-20°C~ +70 °C	-40°C~ +50 °C	IP21 /IP55
	PE6025	2B	12	6100	31.5	0.42	-10°C~ +70 °C	-20°C~ +70 °C	-40°C~ +50 °C	IP21 /IP55
	PE6025	2B	12	5600	29.0	0.36	-10°C~ +70 °C	-20°C~ +70 °C	-40°C~ +50 °C	IP21 /IP55
	EE6025	2B	12	4500	23.5	0.21	-10°C~ +70 °C	-20°C~ +70 °C	-40°C~ +50 °C	IP21 /IP55
	MB6025	Vapo	12	5200	27.0	0.31	-10°C~ +70 °C	N/A		IP21
	MB6025	Vapo	12	4500	23.5	0.21	-10°C~ +70 °C	N/A		IP21
	MB6025	Vapo	12	3800	19.3	0.15	-10°C~ +70 °C	N/A		IP21
	MB6025	Vapo	12	3100	16.0	0.10	-10°C~ +70 °C	N/A		IP21
	HA6025	Vapo	12	2500	13.8	0.04	-10°C~ +70 °C	N/A		IP21
70x70x20	PF7020	Vapo	12	4600	43.0	0.28	-10°C~ +70 °C	N/A		IP21
	PF7020	Vapo	12	4300	40.0	0.24	-10°C~ +70 °C	N/A		IP21
	PF7020	Vapo	12	4000	37.0	0.21	-10°C~ +70 °C	N/A		IP21
	ME7020	Vapo	12	3200	29.0	0.14	-10°C~ +70 °C	N/A		IP21
	ME7020	Vapo	12	2900	27.0	0.12	-10°C~ +70 °C	N/A		IP21
	ME7020	Vapo	12	2600	23.5	0.09	-10°C~ +70 °C	N/A		IP21
70x70x25	PMD7025	Vapo	12	5100	49.0	0.36	-10°C~ +70 °C	-20°C~ +50 °C	-40°C~ +50 °C	IP21
	PMD7025	Vapo	12	4700	45.0	0.31	-10°C~ +70 °C	-20°C~ +50 °C	-40°C~ +50 °C	IP21
	PMD7025	Vapo	12	4200	40.0	0.25	-10°C~ +70 °C	-20°C~ +50 °C	-40°C~ +50 °C	IP21
	PMD7025	2B	12	5100	49.0	0.36	-10°C~ +70 °C	-20°C~ +70 °C	-40°C~ +50 °C	IP55
	PMD7025	2B	12	4700	45.0	0.31	-10°C~ +70 °C	-20°C~ +70 °C	-40°C~ +50 °C	IP55
	PMD7025	2B	12	4200	40.0	0.25	-10°C~ +70 °C	-20°C~ +70 °C	-40°C~ +50 °C	IP55
80x80x15	ME8015	Vapo	12	3000	37.0	0.14	-10°C~ +70 °C	-20°C~ +50 °C	-40°C~ +50 °C	IP21
	ME8015	Vapo	12	2700	33.6	0.11	-10°C~ +70 °C	-20°C~ +50 °C	-40°C~ +50 °C	IP21
	ME8015	Vapo	12	2400	30.0	0.09	-10°C~ +70 °C	-20°C~ +50 °C	-40°C~ +50 °C	IP21
80x80x20	PF8020	Vapo	12	4600	53.0	0.36	-10°C~ +70 °C	N/A		IP21
	PF8020	Vapo	12	4200	49.0	0.31	-10°C~ +70 °C	N/A		IP21
	PF8020	Vapo	12	3900	45.0	0.26	-10°C~ +70 °C	N/A		IP21
	ME8020	Vapo	12	3300	36.0	0.18	-10°C~ +70 °C	N/A		IP21
	ME8020	Vapo	12	3000	33.0	0.16	-10°C~ +70 °C	N/A		IP21
	ME8020	Vapo	12	2600	29.0	0.12	-10°C~ +70 °C	N/A		IP21

* If you need special specification. Please contact Sunon sales.

* Specifications are subject to change without notice. Specifications in this catalog are for reference.
More Sunon products information please visit SUNON website at www.sunon.com.

SUNON®

Cooling Fan for Refrigerator



Cooling Fan Specifications

size (mm)	Model	Bearing	Rated Voltage (V)	Speed (RPM)	Air Flow (CFM)	Static Pressure (In-H ₂ O)	Operation temperature			IP options IP21 IP55
							Standard	Customized option		
80x80x25	PF8025	Vapo	12	4800	60.0	0.41	-10°C~ +70 °C	-20°C~ +50 °C	-40°C~ +50 °C	IP21
	PF8025	Vapo	12	4500	57.0	0.35	-10°C~ +70 °C	-20°C~ +50 °C	-40°C~ +50 °C	IP21
	PF8025	Vapo	12	4200	53.0	0.30	-10°C~ +70 °C	-20°C~ +50 °C	-40°C~ +50 °C	IP21
	PF8025	2B	12	4800	60.0	0.41	-10°C~ +70 °C	-20°C~ +70 °C	-40°C~ +50 °C	IP21 /IP55
	PF8025	2B	12	4500	57.0	0.35	-10°C~ +70 °C	-20°C~ +70 °C	-40°C~ +50 °C	IP21 /IP55
	PF8025	2B	12	4200	53.0	0.30	-10°C~ +70 °C	-20°C~ +70 °C	-40°C~ +50 °C	IP21 /IP55
	ME8025	Vapo	12	3600	45.0	0.23	-10°C~ +70 °C	-20°C~ +50 °C	-40°C~ +50 °C	IP21
	ME8025	Vapo	12	3200	41.0	0.18	-10°C~ +70 °C	-20°C~ +50 °C	-40°C~ +50 °C	IP21
	ME8025	Vapo	12	2900	37.0	0.15	-10°C~ +70 °C	-20°C~ +50 °C	-40°C~ +50 °C	IP21
	ME8025	Vapo	12	2600	33.0	0.11	-10°C~ +70 °C	-20°C~ +50 °C	-40°C~ +50 °C	IP21
	EE8025	2B	12	3600	45.0	0.23	-10°C~ +70 °C	-20°C~ +70 °C	-40°C~ +50 °C	IP21 /IP55
	EE8025	2B	12	3200	41.0	0.18	-10°C~ +70 °C	-20°C~ +70 °C	-40°C~ +50 °C	IP21 /IP55
	EE8025	2B	12	2900	37.0	0.15	-10°C~ +70 °C	-20°C~ +70 °C	-40°C~ +50 °C	IP21 /IP55
	EE8025	2B	12	2600	33.0	0.11	-10°C~ +70 °C	-20°C~ +70 °C	-40°C~ +50 °C	IP21 /IP55
	HA8025	Vapo	12	2000	23.7	0.05	-10°C~ +70 °C	N/A		IP21
	MA8025	Vapo	115 (50Hz)	3200	40.0	0.14	-10°C~ +70 °C	N/A		IP21
MA8025	Vapo	220~240 (60Hz)	3300	41.0	0.15	-10°C~ +70 °C	N/A		IP21	
80x80x32	PF8032	2B	12	4800	59.4	0.36	-10°C~ +70 °C	-20°C~ +70 °C	-40°C~ +50 °C	IP21 /IP55
	PF8032	2B	12	4500	55.9	0.32	-10°C~ +70 °C	-20°C~ +70 °C	-40°C~ +50 °C	IP21 /IP55
	PF8032	2B	12	4100	50.3	0.27	-10°C~ +70 °C	-20°C~ +70 °C	-40°C~ +50 °C	IP21 /IP55
92x92x25	PF9225	Vapo	12	4500	75.0	0.35	-10°C~ +70 °C	-20°C~ +50 °C	-40°C~ +50 °C	IP21
	PF9225	Vapo	12	4200	70.0	0.30	-10°C~ +70 °C	-20°C~ +50 °C	-40°C~ +50 °C	IP21
	PF9225	Vapo	12	3900	65.0	0.25	-10°C~ +70 °C	-20°C~ +50 °C	-40°C~ +50 °C	IP21
	PF9225	2B	12	4500	75.0	0.35	-10°C~ +70 °C	-20°C~ +70 °C	-40°C~ +50 °C	IP21 /IP55
	PF9225	2B	12	4200	70.0	0.30	-10°C~ +70 °C	-20°C~ +70 °C	-40°C~ +50 °C	IP21 /IP55
	PF9225	2B	12	3900	65.0	0.25	-10°C~ +70 °C	-20°C~ +70 °C	-40°C~ +50 °C	IP21 /IP55

* If you need special specification. Please contact Sunon sales.

* Specifications are subject to change without notice. Specifications in this catalog are for reference.
More Sunon products information please visit SUNON website at www.sunon.com.

SUNON®

Cooling Fan for Refrigerator



Cooling Fan Specifications

size (mm)	Model	Bearing	Rated Voltage (V)	Speed (RPM)	Air Flow (CFM)	Static Pressure (In-H ₂ O)	Operation temperature			IP options IP21 IP55
							Standard	Customized option		
92x92x25	ME9225	Vapo	12	3400	55.0	0.21	-10°C~ +70 °C	-20°C~ +50 °C	-40°C~ +50 °C	IP21
	ME9225	Vapo	12	3000	51.5	0.15	-10°C~ +70 °C	-20°C~ +50 °C	-40°C~ +50 °C	IP21
	ME9225	Vapo	12	2700	45.0	0.13	-10°C~ +70 °C	-20°C~ +50 °C	-40°C~ +50 °C	IP21
	ME9225	Vapo	12	2400	39.5	0.10	-10°C~ +70 °C	-20°C~ +50 °C	-40°C~ +50 °C	IP21
	EE9225	2B	12	3400	55.0	0.21	-10°C~ +70 °C	-20°C~ +70 °C	-40°C~ +50 °C	IP21 /IP55
	EE9225	2B	12	3000	51.5	0.15	-10°C~ +70 °C	-20°C~ +70 °C	-40°C~ +50 °C	IP21 /IP55
	EE9225	2B	12	2700	45.0	0.13	-10°C~ +70 °C	-20°C~ +70 °C	-40°C~ +50 °C	IP21 /IP55
	EE9225	2B	12	2400	39.5	0.10	-10°C~ +70 °C	-20°C~ +70 °C	-40°C~ +50 °C	IP21 /IP55
	HA9225	Vapo	12	1700	28.1	0.04	-10°C~ +70 °C	N/A		IP21
	MA9225	Vapo	115 (50Hz)	2900	52.0	0.12	-10°C~ +70 °C	N/A		IP21
	MA9225	Vapo	220~240 (50Hz)	2900	52.0	0.12	-10°C~ +70 °C	N/A		IP21
	MA9225	Vapo	115 (60Hz)	3000	54.0	0.14	-10°C~ +70 °C	N/A		IP21
MA9225	Vapo	220~240 (60Hz)	3000	54.0	0.14	-10°C~ +70 °C	N/A		IP21	
92x92x32	PSD9232	Vapo	12	4000	79.0	0.36	-10°C~ +70 °C	-20°C~ +50 °C	-40°C~ +50 °C	IP21
120x120x25	PMD12025	2B	12	4500	150.0	0.62	-10°C~ +70 °C	-20°C~ +70 °C	-40°C~ +50 °C	IP21 /IP55
	PMD12025	2B	12	3600	120.0	0.41	-10°C~ +70 °C	-20°C~ +70 °C	-40°C~ +50 °C	IP21 /IP55
	MF12025	Vapo	12	3100	108.2	0.28	-10°C~ +70 °C	-20°C~ +50 °C	-40°C~ +50 °C	IP21
	MF12025	Vapo	12	2700	93.0	0.22	-10°C~ +70 °C	-20°C~ +50 °C	-40°C~ +50 °C	IP21
	MF12025	Vapo	12	2200	75.0	0.16	-10°C~ +70 °C	-20°C~ +50 °C	-40°C~ +50 °C	IP21
	EE12025	2B	12	3100	108.2	0.28	-10°C~ +70 °C	-20°C~ +70 °C	-40°C~ +50 °C	IP21 /IP55
	EE12025	2B	12	2700	93.0	0.22	-10°C~ +70 °C	-20°C~ +70 °C	-40°C~ +50 °C	IP21 /IP55
	EE12025	2B	12	2200	75.0	0.16	-10°C~ +70 °C	-20°C~ +70 °C	-40°C~ +50 °C	IP21 /IP55
HA12025	Sleeve	12	1600	55.0	0.06	-10°C~ +70 °C	N/A		IP21	
120x120x38	PMD12038	2B	12	4200	190.0	0.65	-10°C~ +70 °C	-20°C~ +70 °C	-40°C~ +50 °C	IP21 /IP55
	PMD12038	2B	12	3800	170.0	0.54	-10°C~ +70 °C	-20°C~ +70 °C	-40°C~ +50 °C	IP21 /IP55
	ME12038	Vapo	12	3100	138.0	0.36	-10°C~ +70 °C	-20°C~ +50 °C		IP21
	ME12038	Vapo	12	2600	116.0	0.26	-10°C~ +70 °C	-20°C~ +50 °C		IP21
	ME12038	Vapo	12	2100	93.0	0.18	-10°C~ +70 °C	-20°C~ +50 °C		IP21
	EE12038	2B	12	3100	138.0	0.36	-10°C~ +70 °C	-20°C~ +70 °C	-40°C~ +50 °C	IP21 /IP55
	EE12038	2B	12	2600	116.0	0.26	-10°C~ +70 °C	-20°C~ +70 °C	-40°C~ +50 °C	IP21 /IP55
EE12038	2B	12	2100	93.0	0.18	-10°C~ +70 °C	-20°C~ +70 °C	-40°C~ +50 °C	IP21 /IP55	

* If you need special specification. Please contact Sunon sales.

* Specifications are subject to change without notice. Specifications in this catalog are for reference.
More Sunon products information please visit SUNON website at www.sunon.com.

SUNON®

Cooling Blower for Refrigerator



Cooling Blower Specifications

size (mm)	Model	Bearing	Rated Voltage (V)	Speed (RPM)	Air Flow (CFM)	Static Pressure (In-H ₂ O)	Operation temperature			IP options IP21 IP55
							Standard	Customized option		
75x75x30	PMB7530	2B	12	3400	13.6	0.60	-10°C~ +70 °C	-20°C~ +70 °C	-40°C~ +50 °C	IP21 /IP55
	PMB7530	2B	12	3000	12.3	0.48	-10°C~ +70 °C	-20°C~ +70 °C	-40°C~ +50 °C	IP21 /IP55
	PMB7530	2B	12	2400	9.6	0.27	-10°C~ +70 °C	-20°C~ +70 °C	-40°C~ +50 °C	IP21 /IP55
97x94x33	PMB9733	2B	12	2700	22.4	0.43	-10°C~ +70 °C	-20°C~ +70 °C	-40°C~ +50 °C	IP21 /IP55
	PF9733	2B	12	6800	54.7	5.22	-10°C~ +70 °C	-20°C~ +70 °C	-40°C~ +50 °C	IP21 /IP55
	PF9733	2B	12	5400	44.2	3.39	-10°C~ +70 °C	-20°C~ +70 °C	-40°C~ +50 °C	IP21 /IP55
120X120X32	PMB12032	2B	12	2500	35.9	0.89	-10°C~ +70 °C	-20°C~ +70 °C	-40°C~ +50 °C	IP21 /IP55
	PMB12032	2B	12	2100	31.4	0.64	-10°C~ +70 °C	-20°C~ +70 °C	-40°C~ +50 °C	IP21 /IP55

* If you need special specification. Please contact Sunon sales.

* Specifications are subject to change without notice. Specifications in this catalog are for reference.
More Sunon products information please visit SUNON website at www.sunon.com.

SUNON[®]

Headquarters
Sunonwealth Electric Machine Industry Co., Ltd.
TEL : +886-7-8135888
E-mail : sunon@email.sunon.com.tw

Sunon Inc. (U.S.A.)
TEL : +1-714-255-0208
E-mail : info@sunon.com

Sunon SAS (Europe)
TEL : +33-1-46154515
E-mail : info@sunoneurope.com

Sunon Taipei Office (Taiwan)
TEL : +886-2-27992383

Sunon Shen Zhen Office (China)
TEL : +86-755-26880688
E-mail : sunon@email.sunon.com.tw

Sunon Beijing Office (China)
TEL : +86-10-62669511
E-mail : sunon@email.sunon.com.tw

Sunon Wuhan Office (China)
TEL : +86-27-81388268
E-mail : sunon@email.sunon.com.tw